

Institutional and Organisational Dimensions in Successful Citywide Slum Upgrading Programmes

1

**Issues to consider when employing a livelihood
improvement approach**

Claudio Acioly Jr.

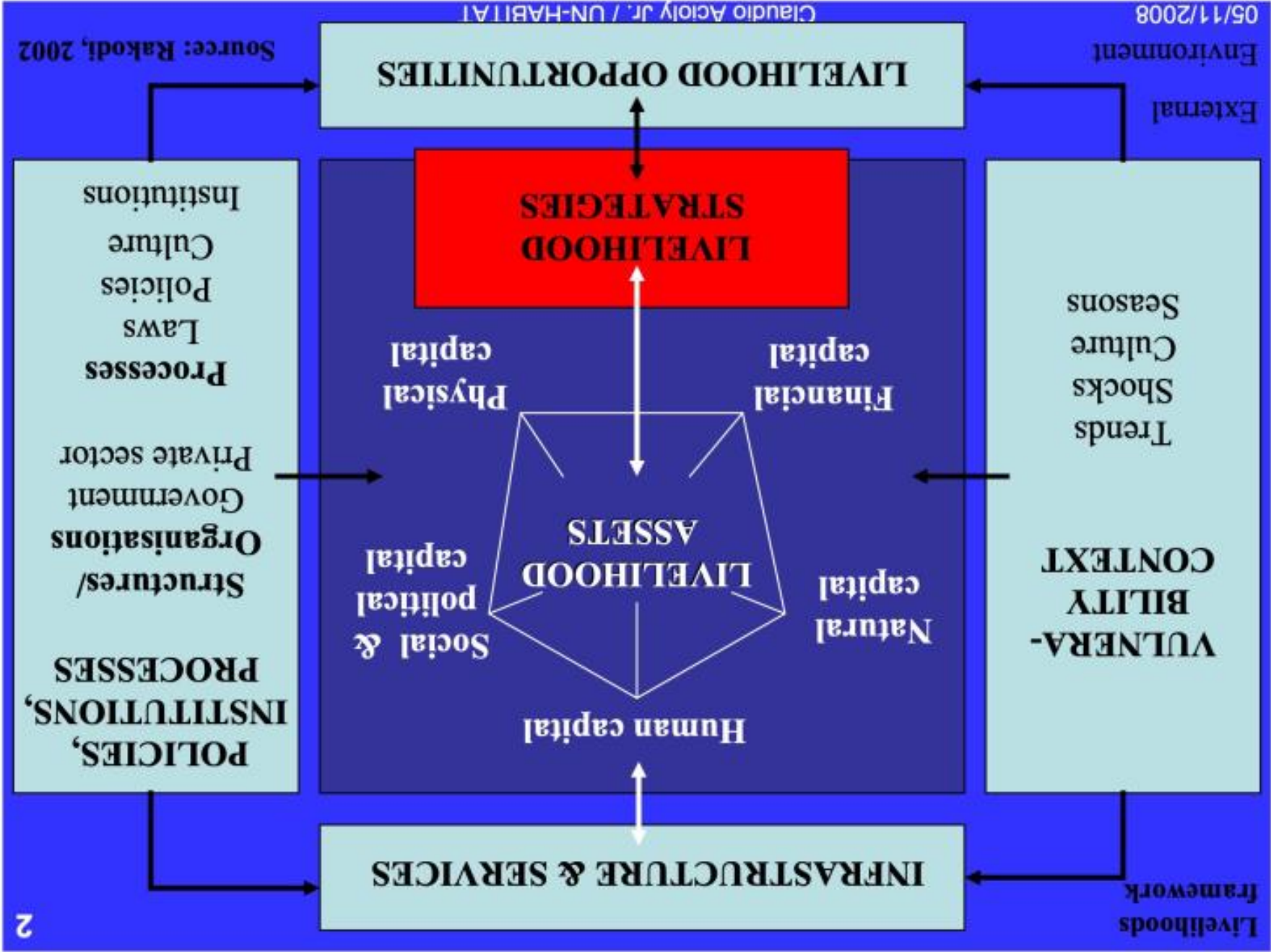
Chief Housing Policy, United Nations Human Settlements Programme

claudio.acioly@unhabitat.org



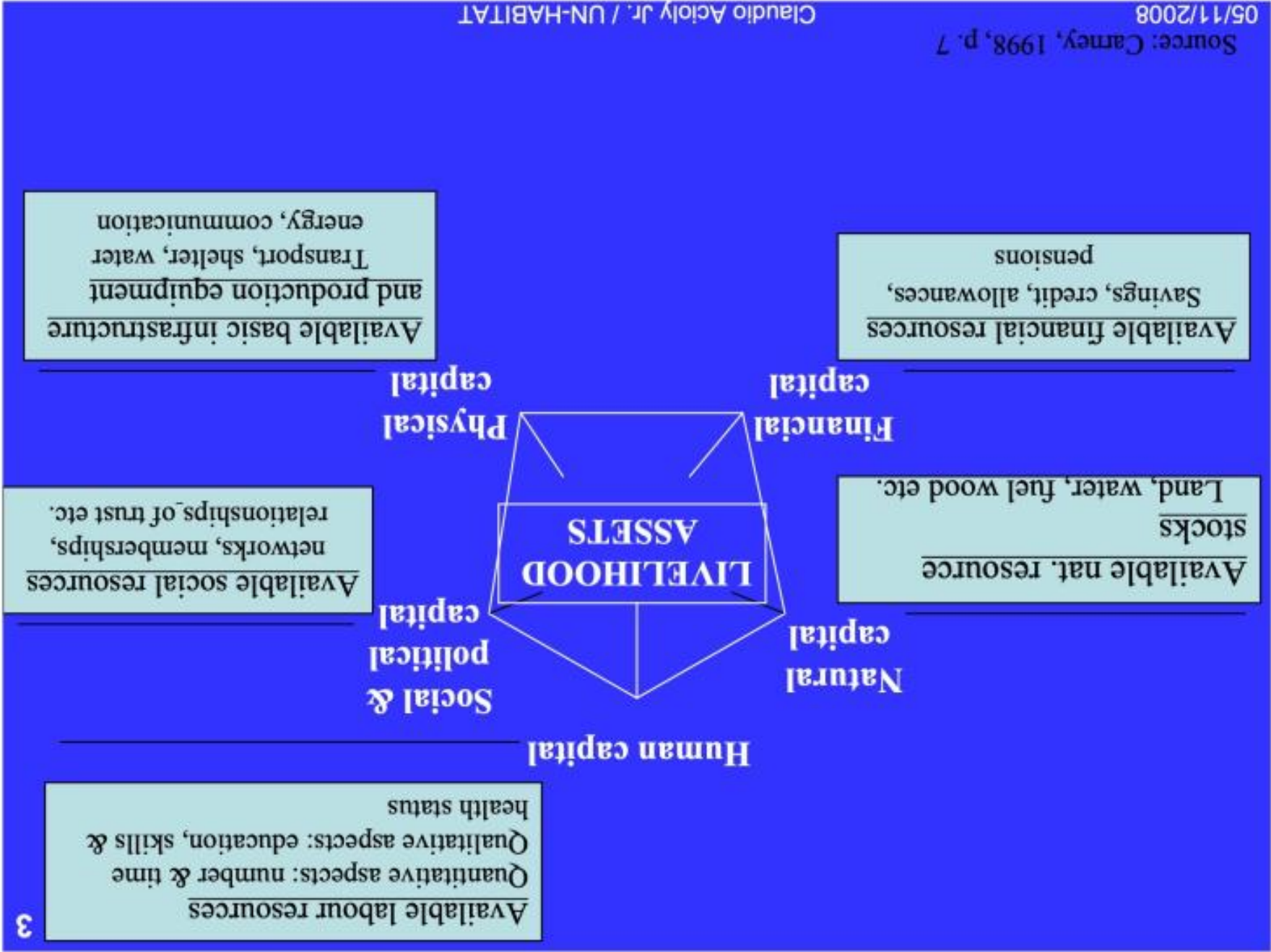
05/11/2008

Claudio Acioly Jr. / UN-HABITAT



Claudio Acioy Jr. / UN-HABITAT

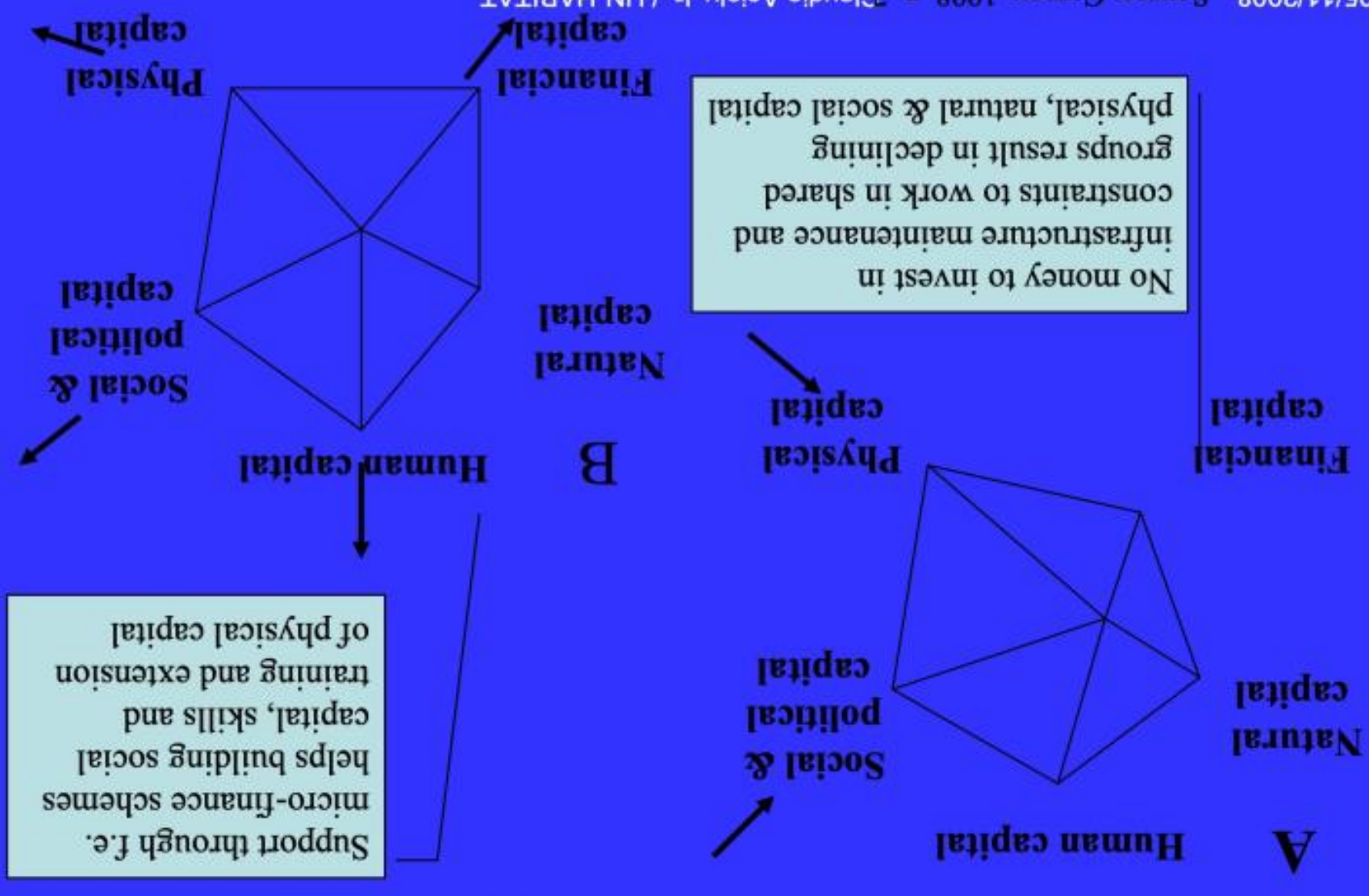
Source: Rakodi, 2002



Source: Carney, 1998, p. 7
05/11/2008

Claudio Acioy Jr. / UN-HABITAT

The Asset Pentagon

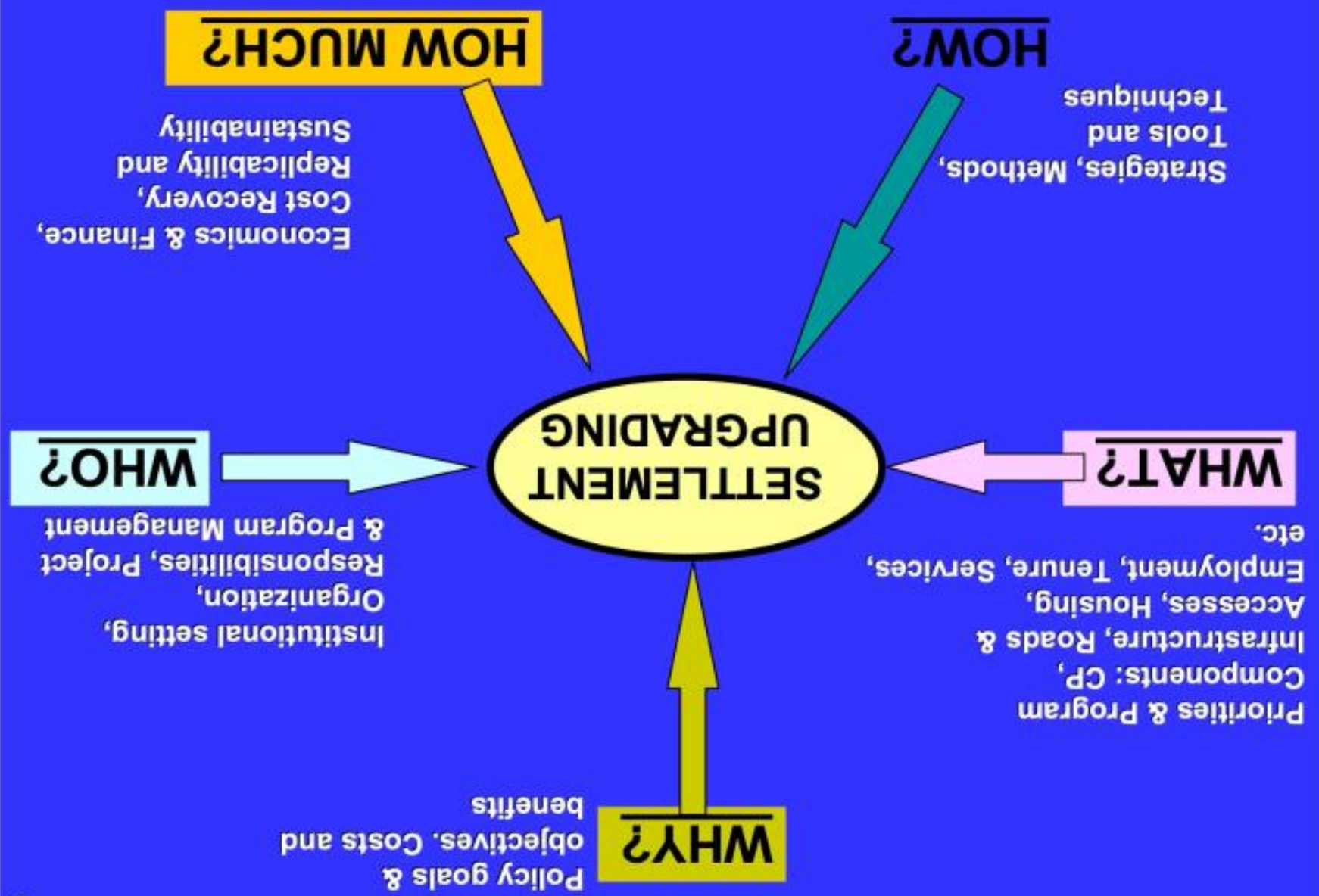


05/11/2008 Source: Carney, 1998, p. Claudio Acoly Jr. / UN-HABITAT

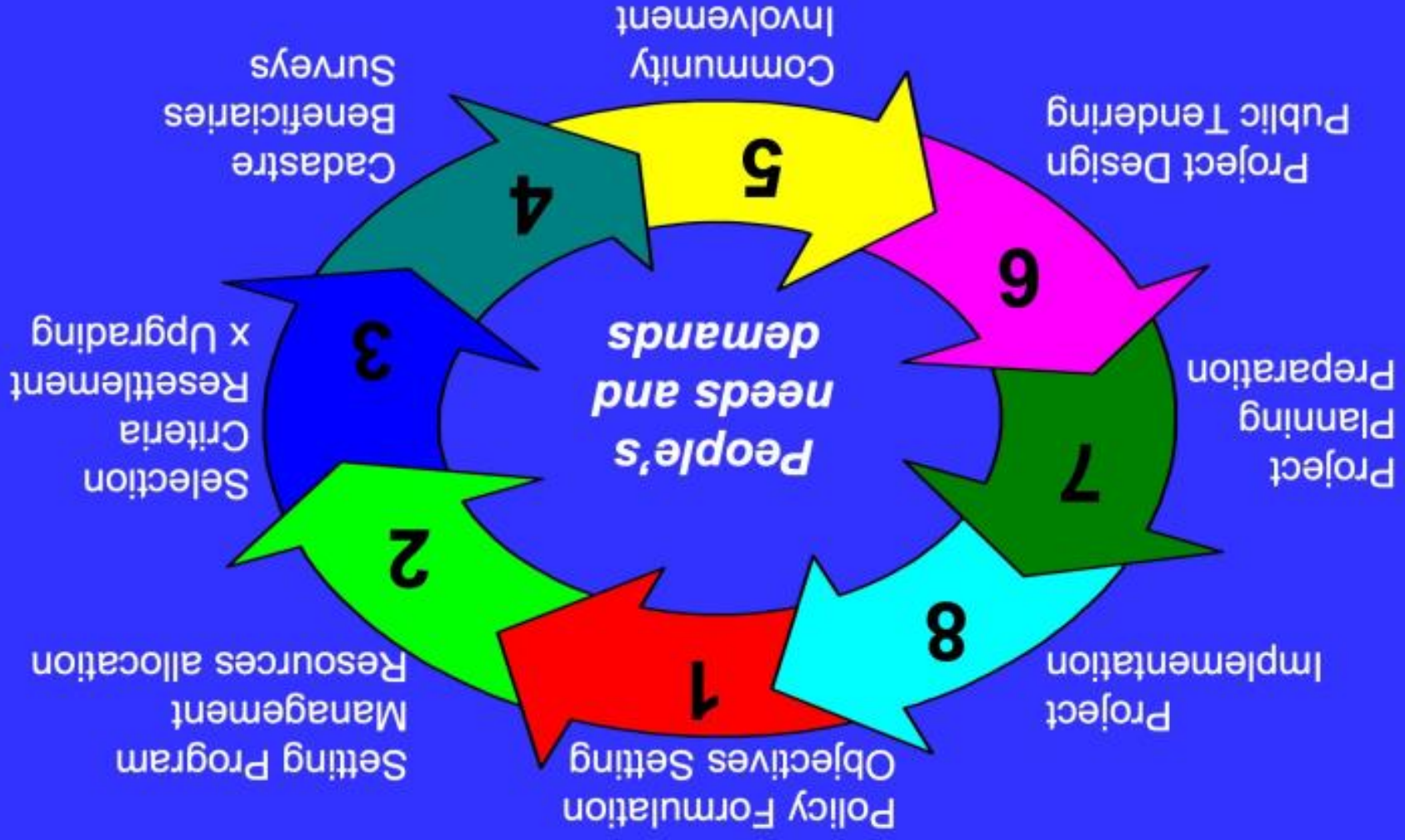
1. The Rationale of Upgrading

05/11/2008

Claudio Acioly Jr. / UN-HABITAT



THE INFORMAL SETTLEMENT UPGRADING CYCLE⁷



2. The Problem

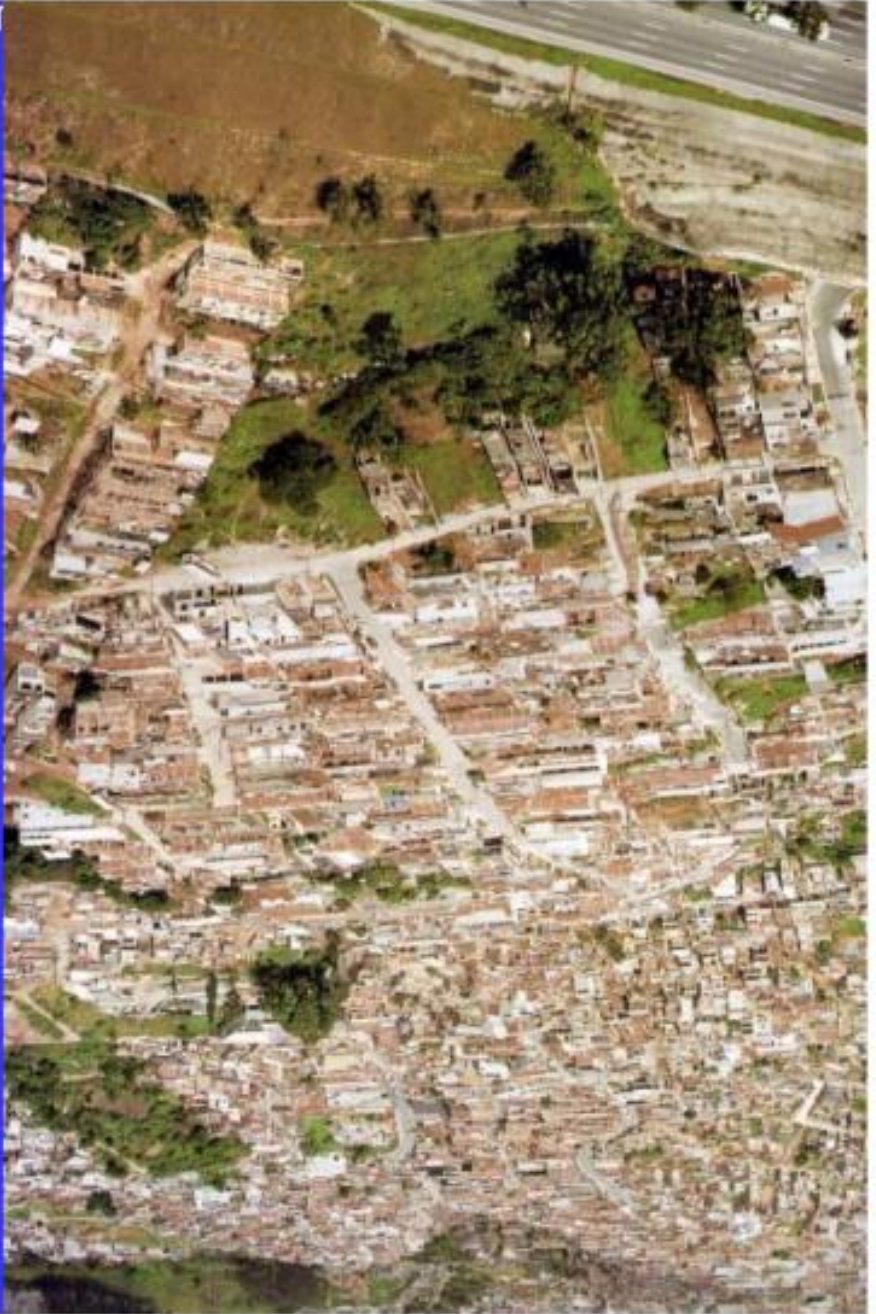


**Illegal subdivision
in Campo Grande**
•Barro Aurora - 448
plots - 2240
inhabitants

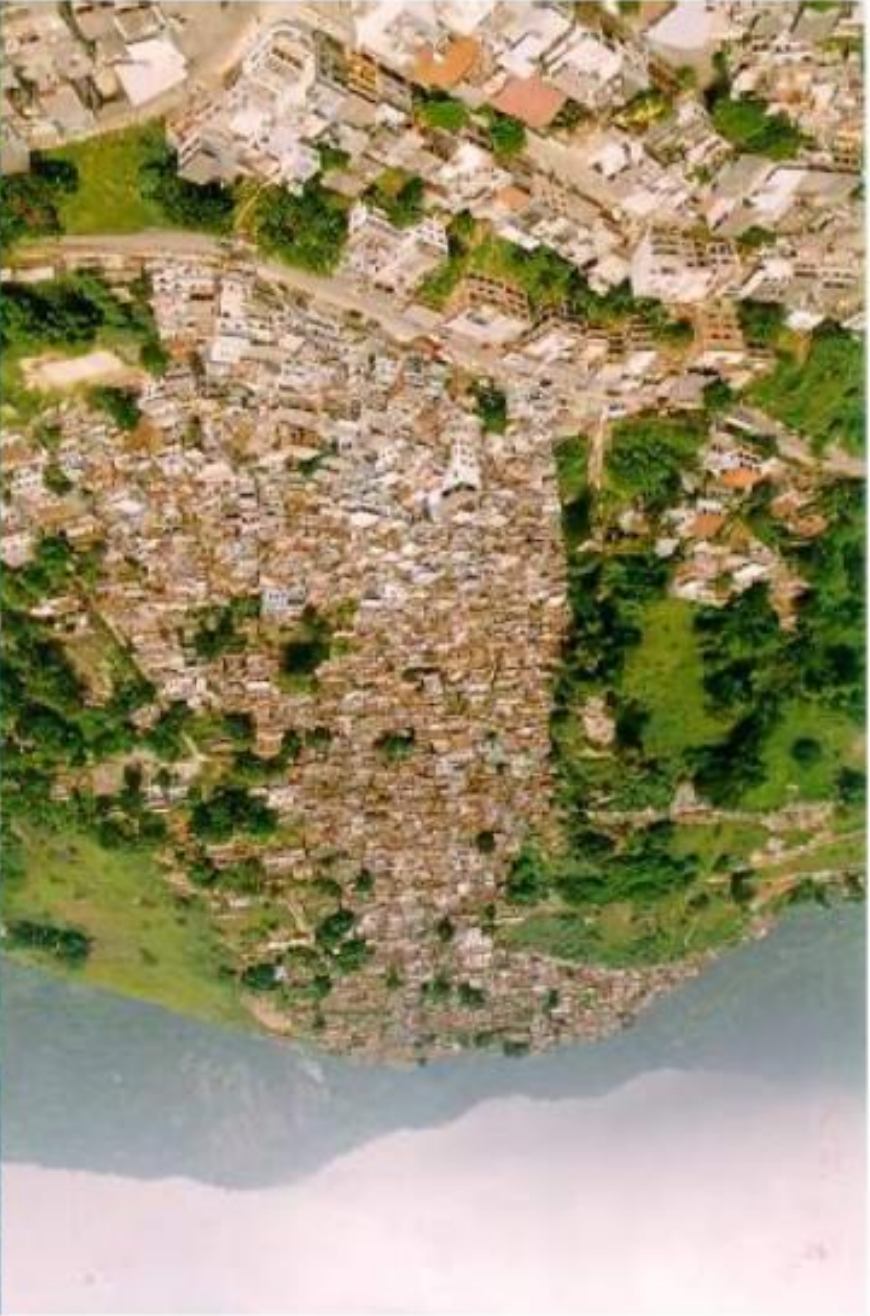
18087



Loteameto Irregular en Guaratiba llamado Jardin Maravilha - 11,754 parcelas (1720 son ocupadas) - 5527 habitantes









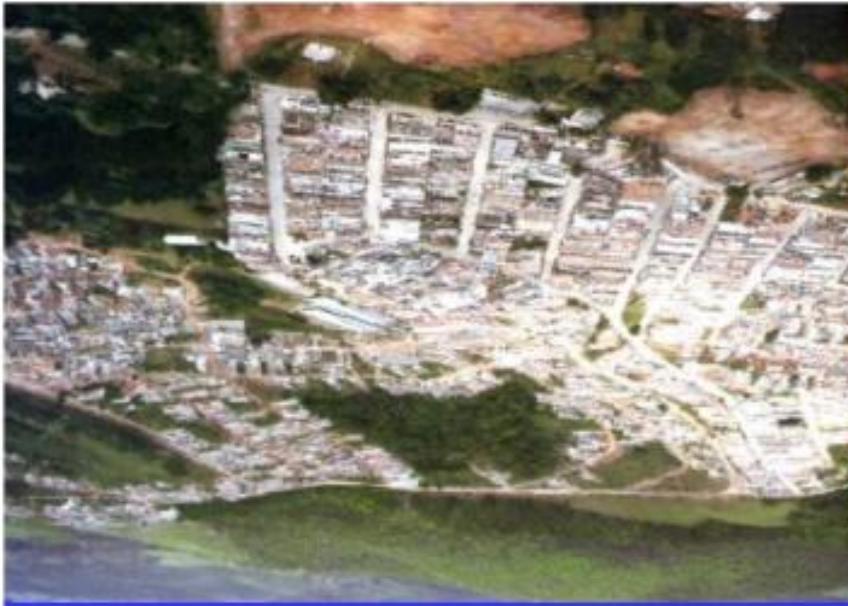
What type of intervention are we talking about?

3.

*Urbanization, Livelihood Improvement,
Regularisation, Settlement Planning, Urban
Integration, Urban Renewal, Urban
Revitalisation, Settlement Upgrading, Land
Regularisation, Legalisation...*

Claudio Acioly Jr. / UN-HABITAT

05/11/2008



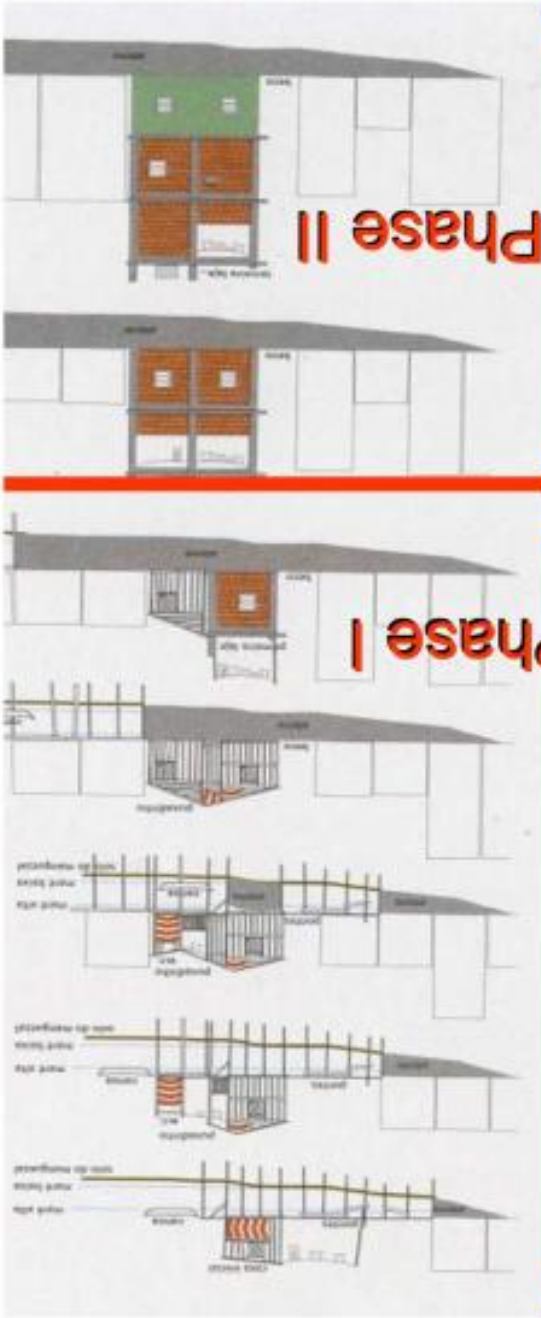
Land Subdivisions
Guided and/or by Sell & Buy

X

Spontaneous Occupations
Organised or Densification



**Totally Distinct Solutions, Approaches and
Intervention Mechanisms**

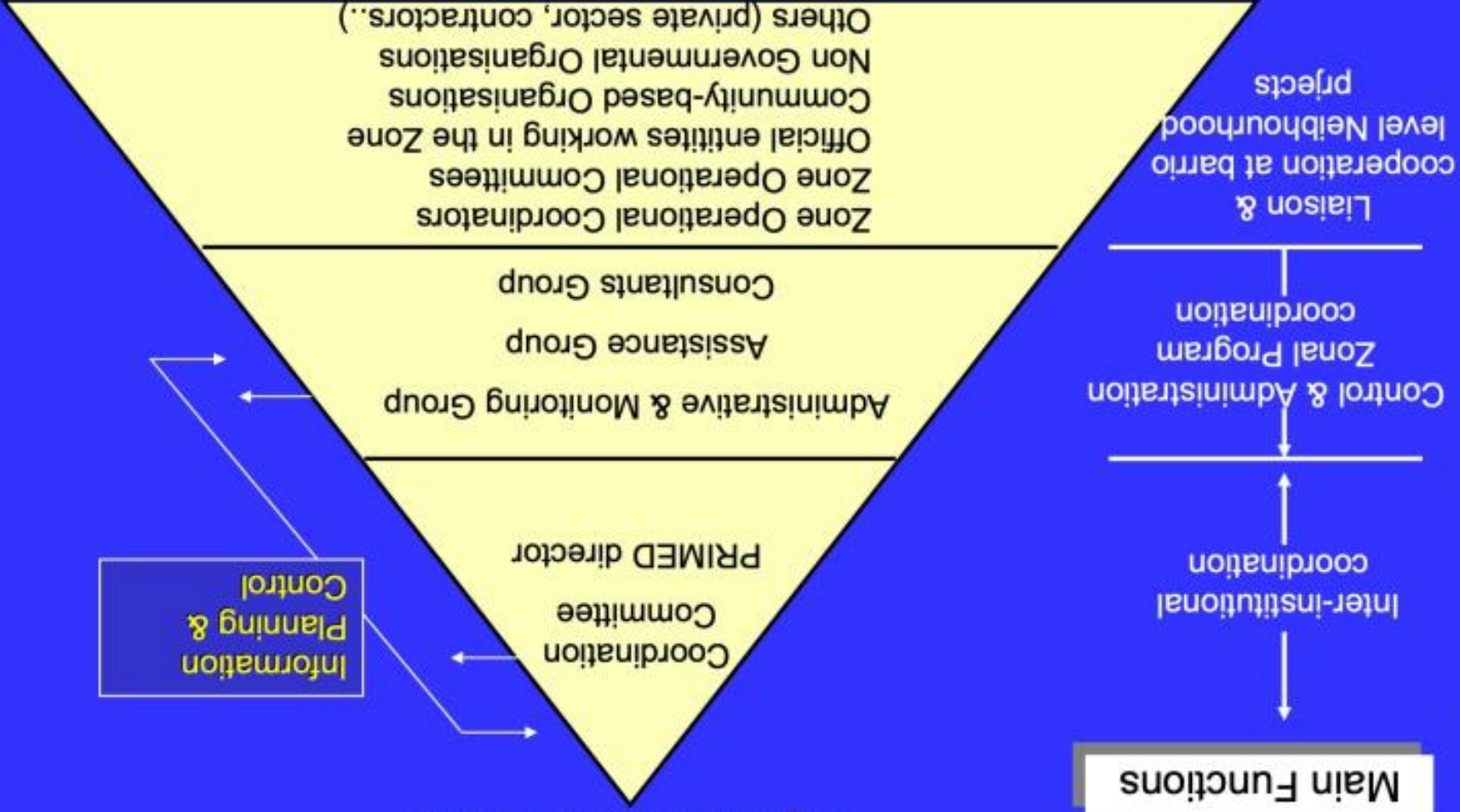


How do we do it? Understanding & managing the process From Project to Programme

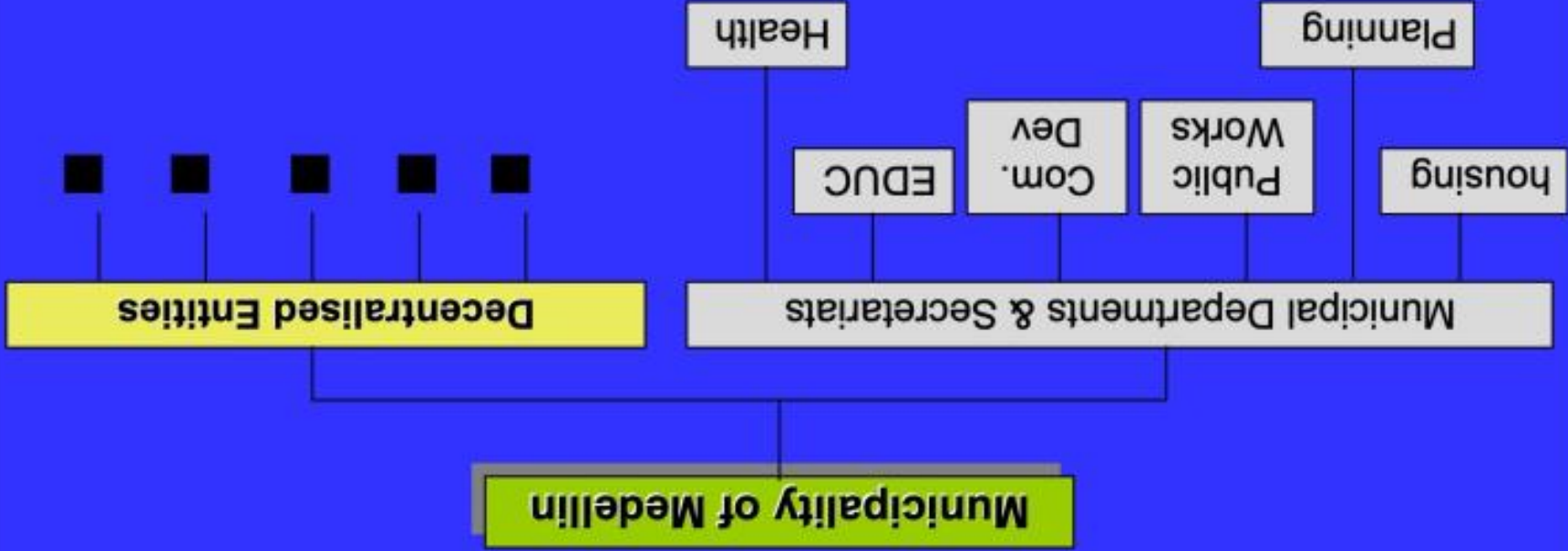
4.

PRIMED-Programa Integral de Mejoramiento de Barrios Subnormales en Medellín

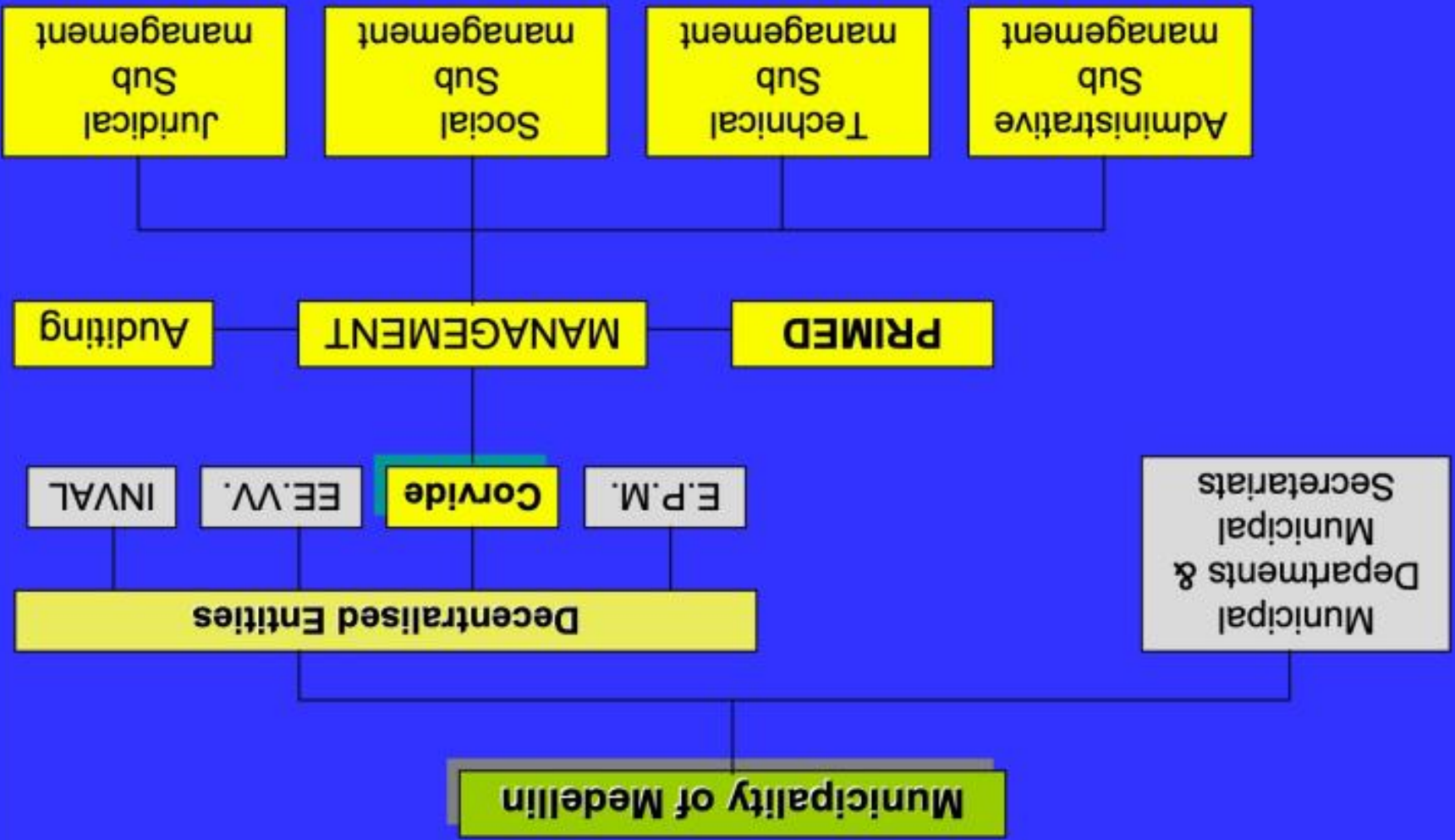
Organisational Scheme

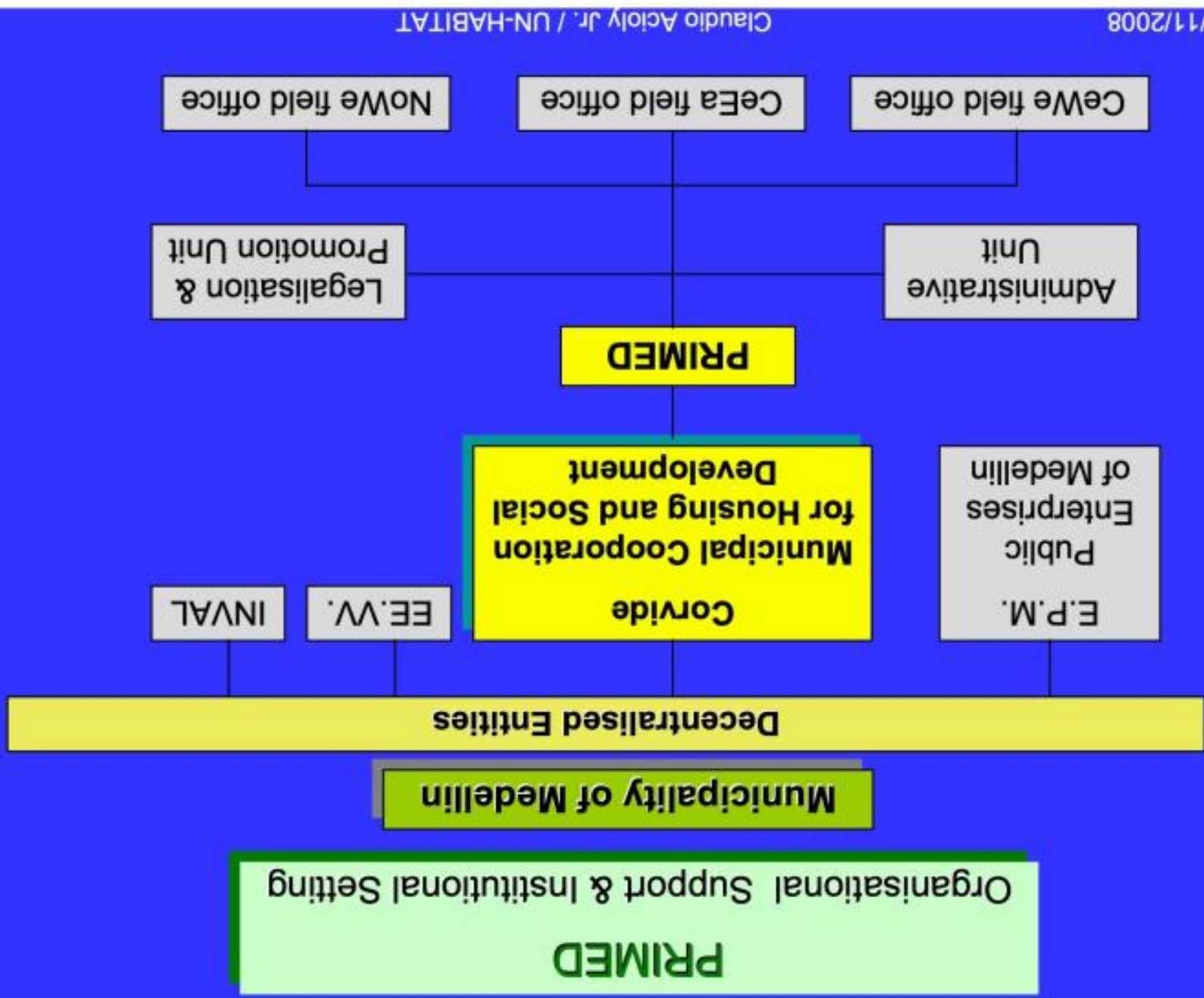


PRIMED
Organisational Support & Institutional Setting



PRIMED
Organisational Support & Institutional Setting





PRIMED

Organisational & Management Structure

Coordinating Committee
Municipality, Cordive, NHA, Federation NGO's, UNDP,
Community Representatives, Metropolitan agency

T. Assistance
Nationals and
Expatriated

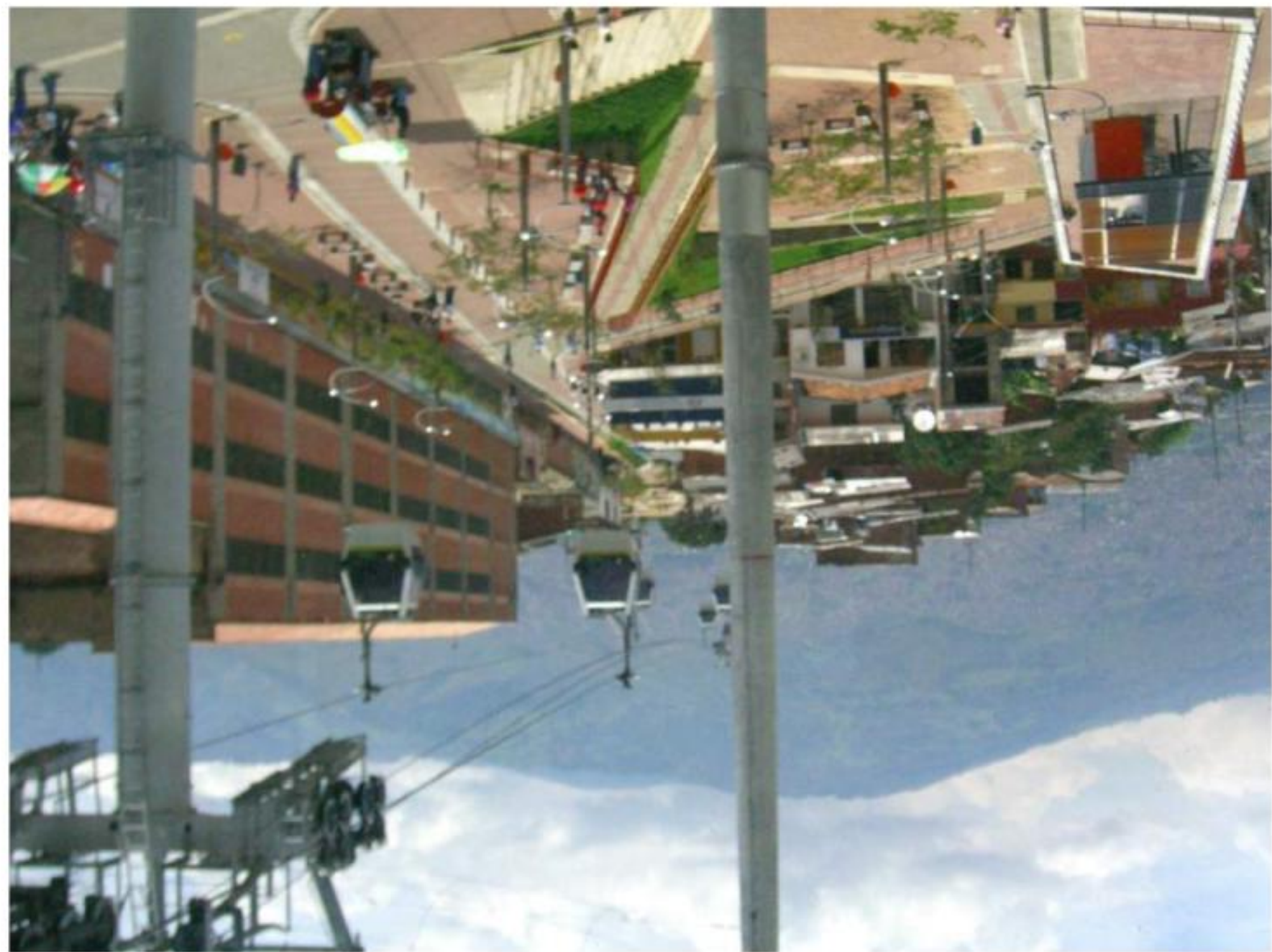
Implementing Agency - CORDIVE
PRIMED Project Manager

Local
Consultants
Per component
at need

Administrative & Monitoring-Inspection Group
Administrative Unit
Legalisation and Promotion Unit

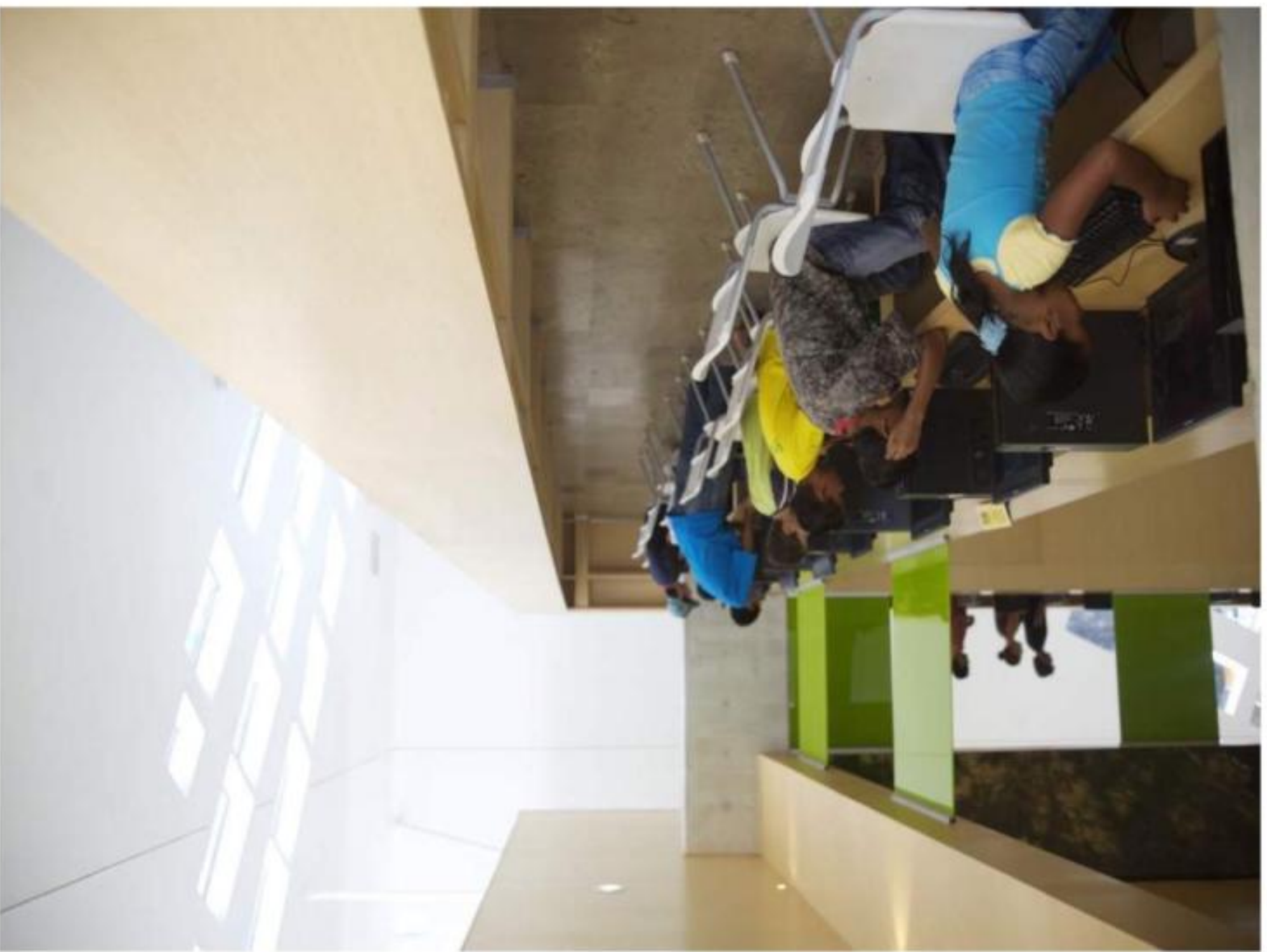
CEWE field office
CEEA field office
NOWE field office

















participation?

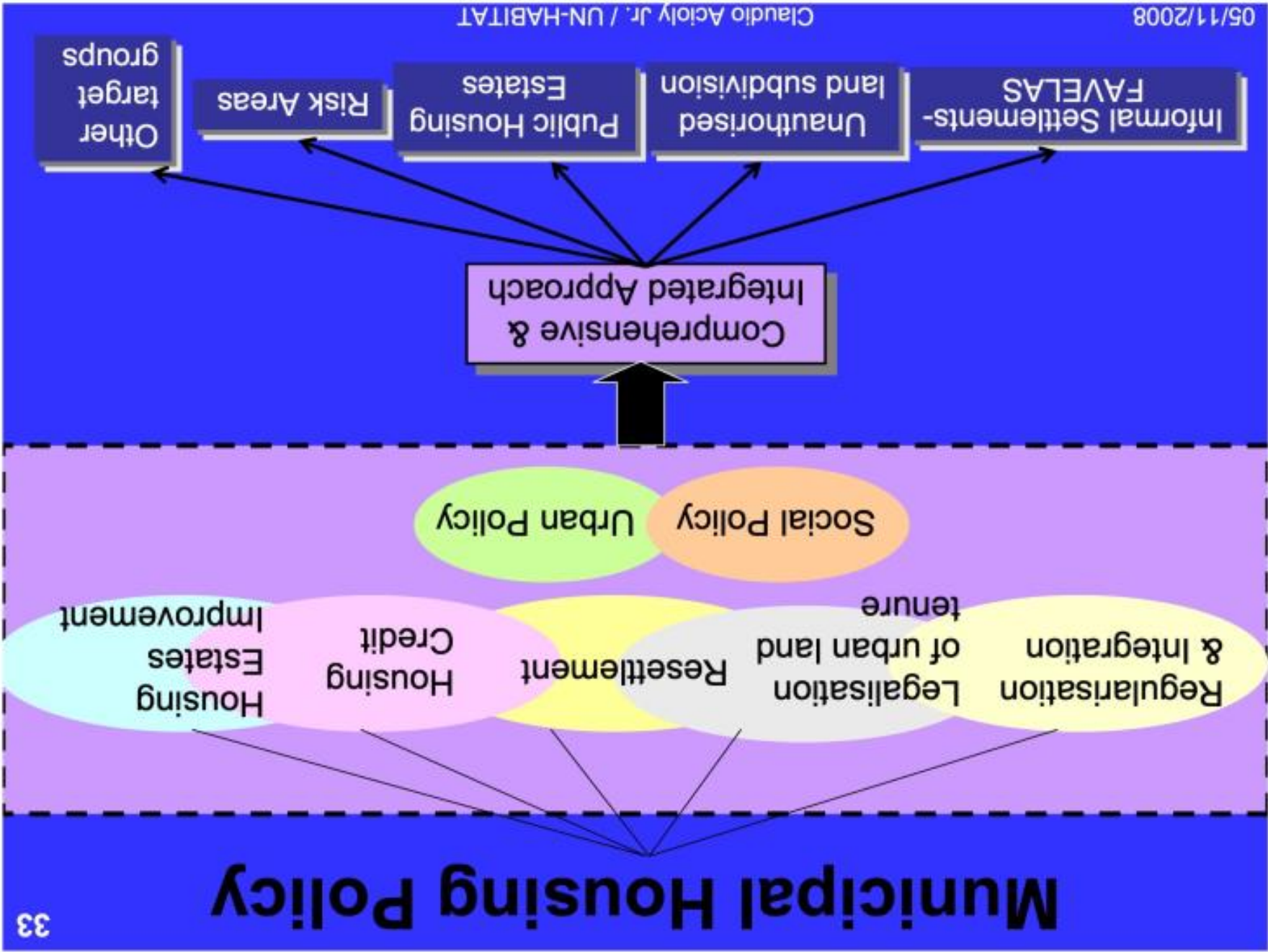
efficiency or for citizen

Arrangements for performance

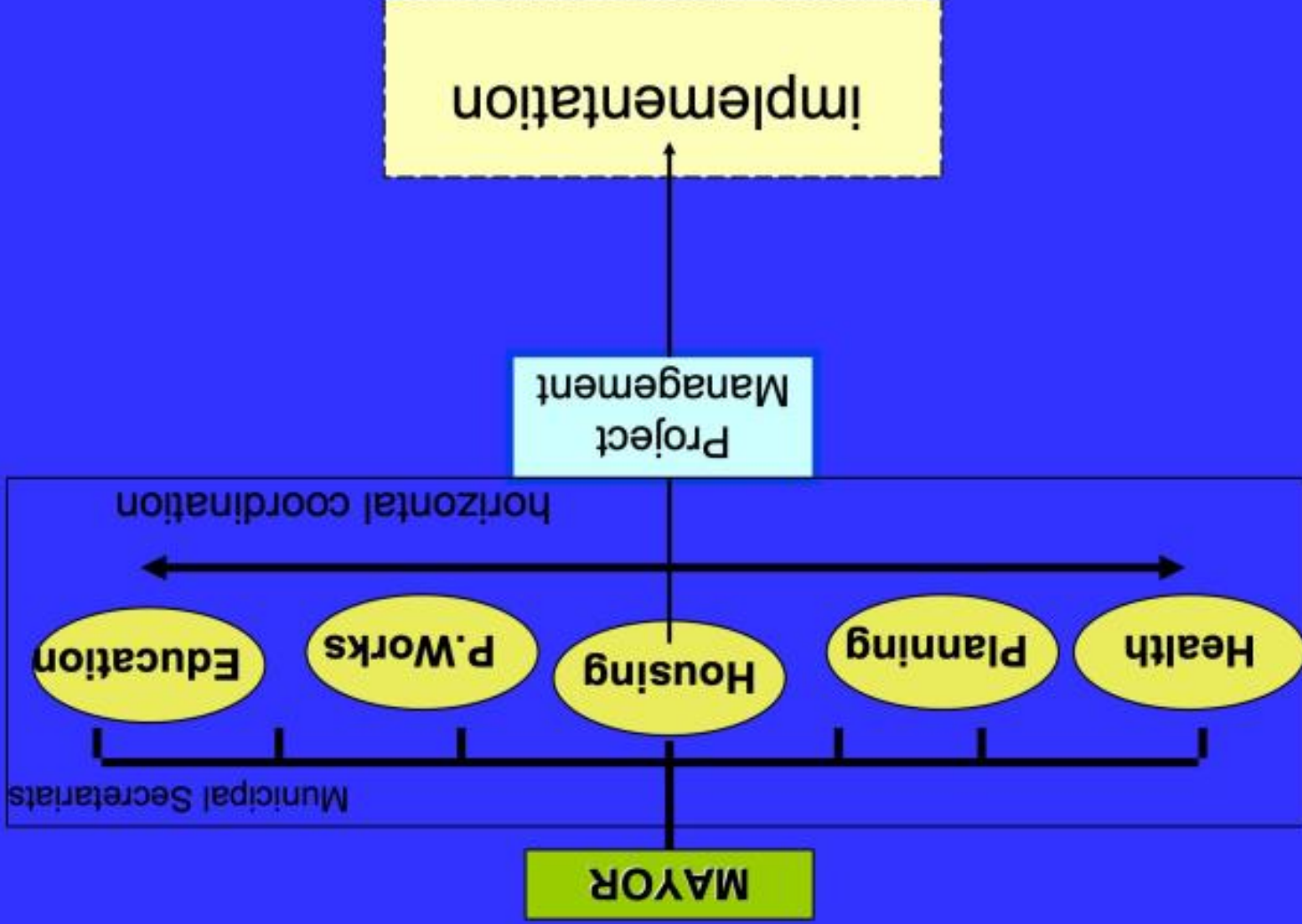
Programme in place:

Putting a Citywide

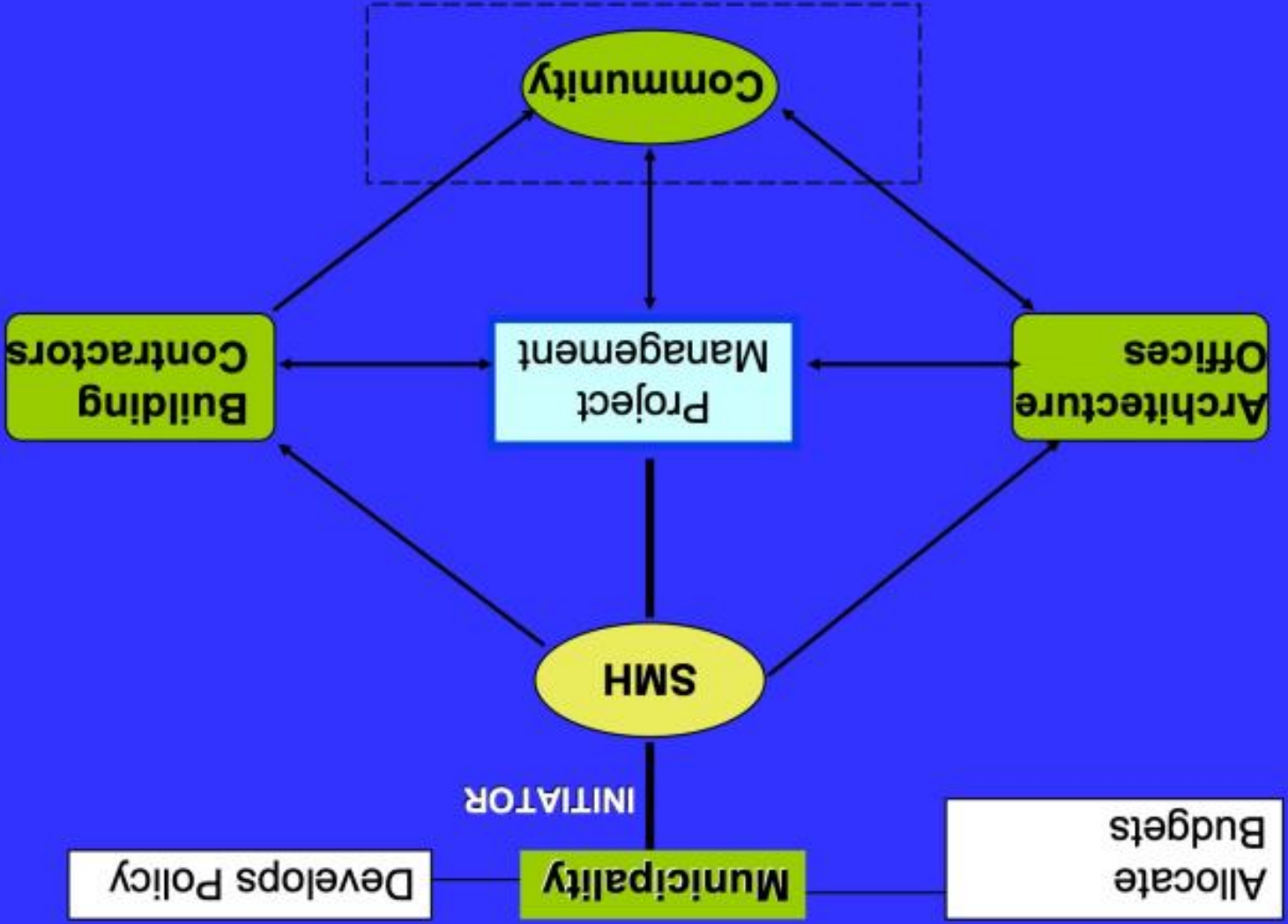
5.



Rio de Janeiro's Upgrading Program - Favela Bairro



Rio de Janeiro's Upgrading Program - Favela Bairro

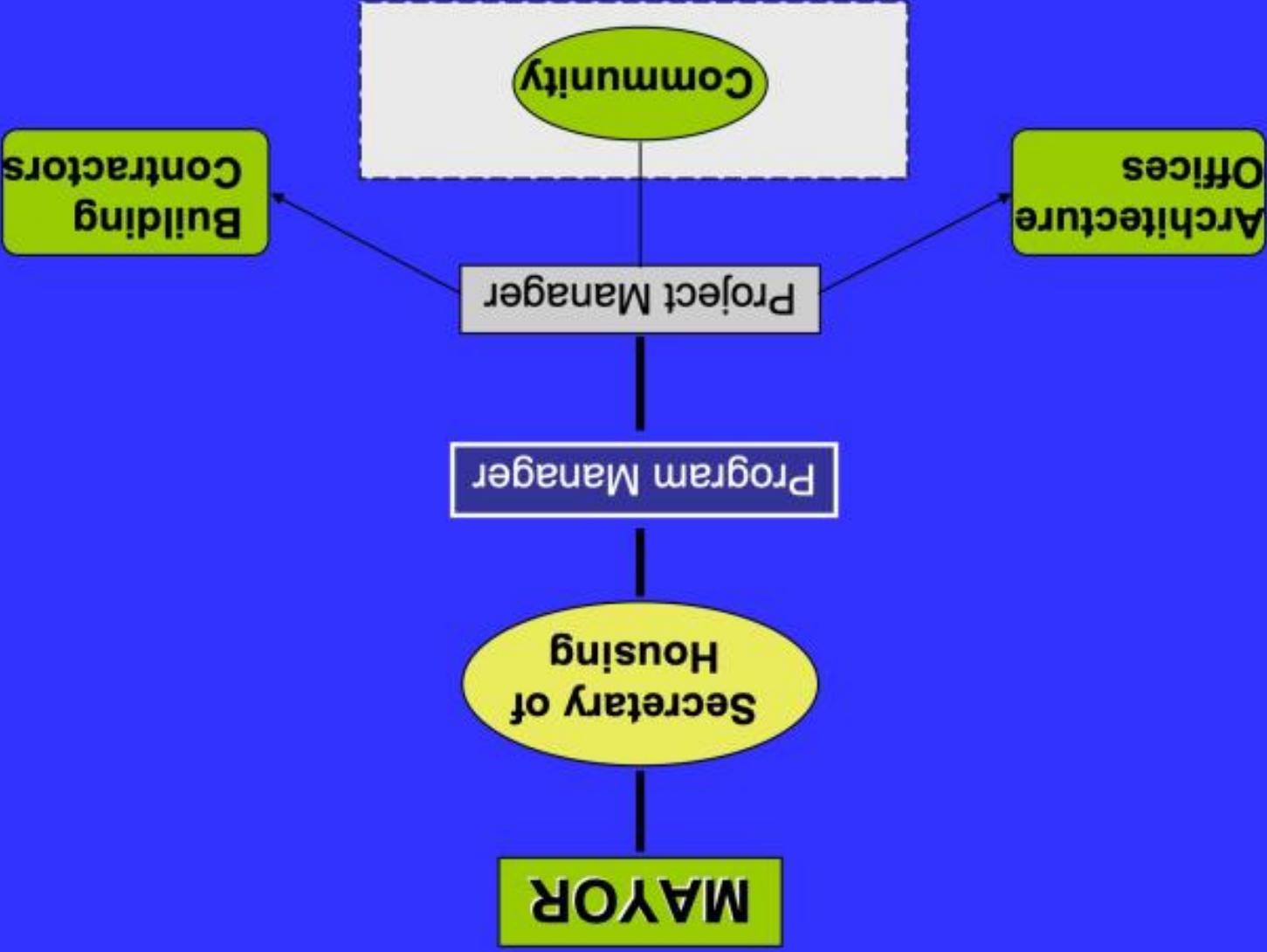


INITIATOR

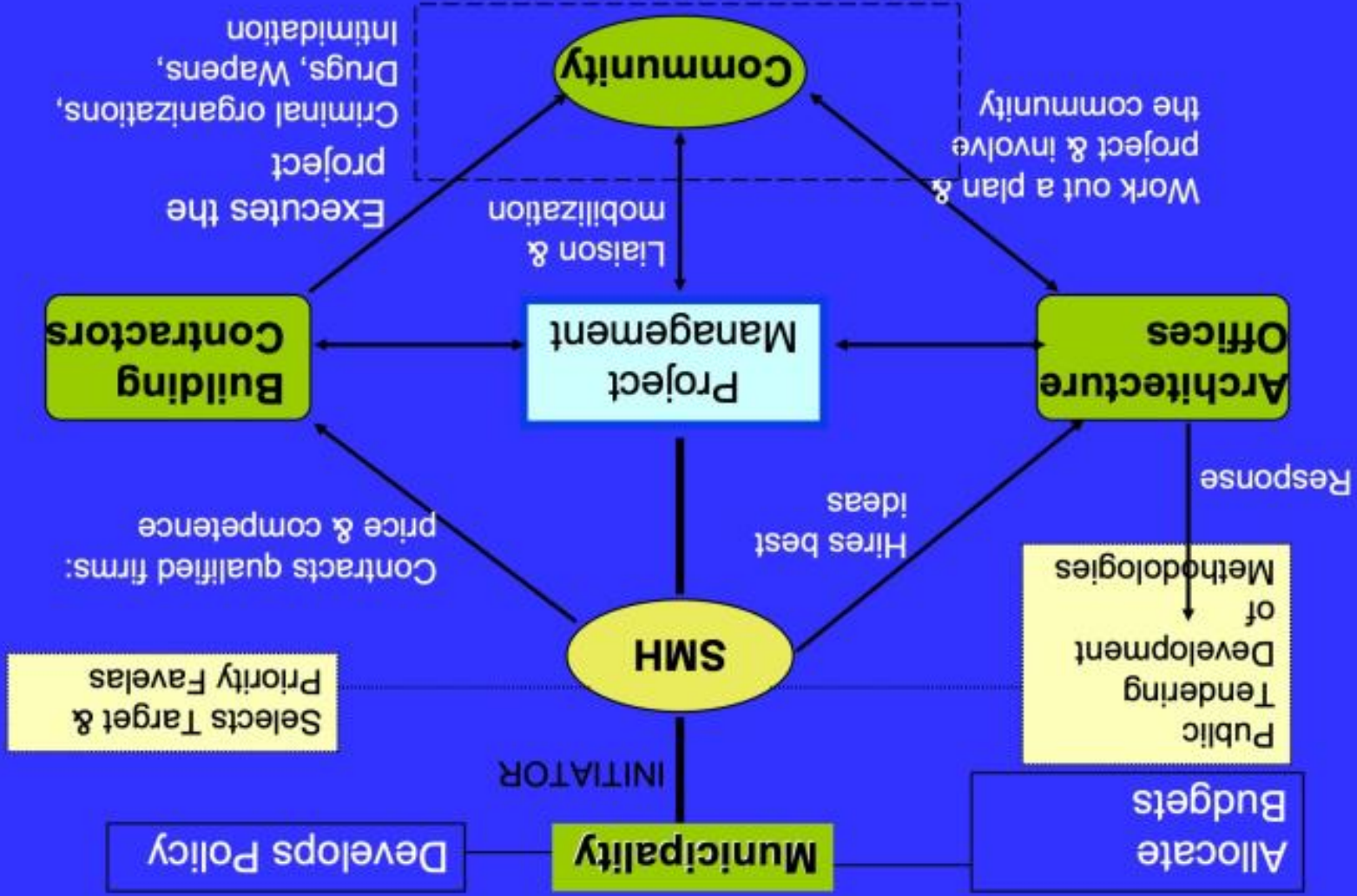
Develops Policy

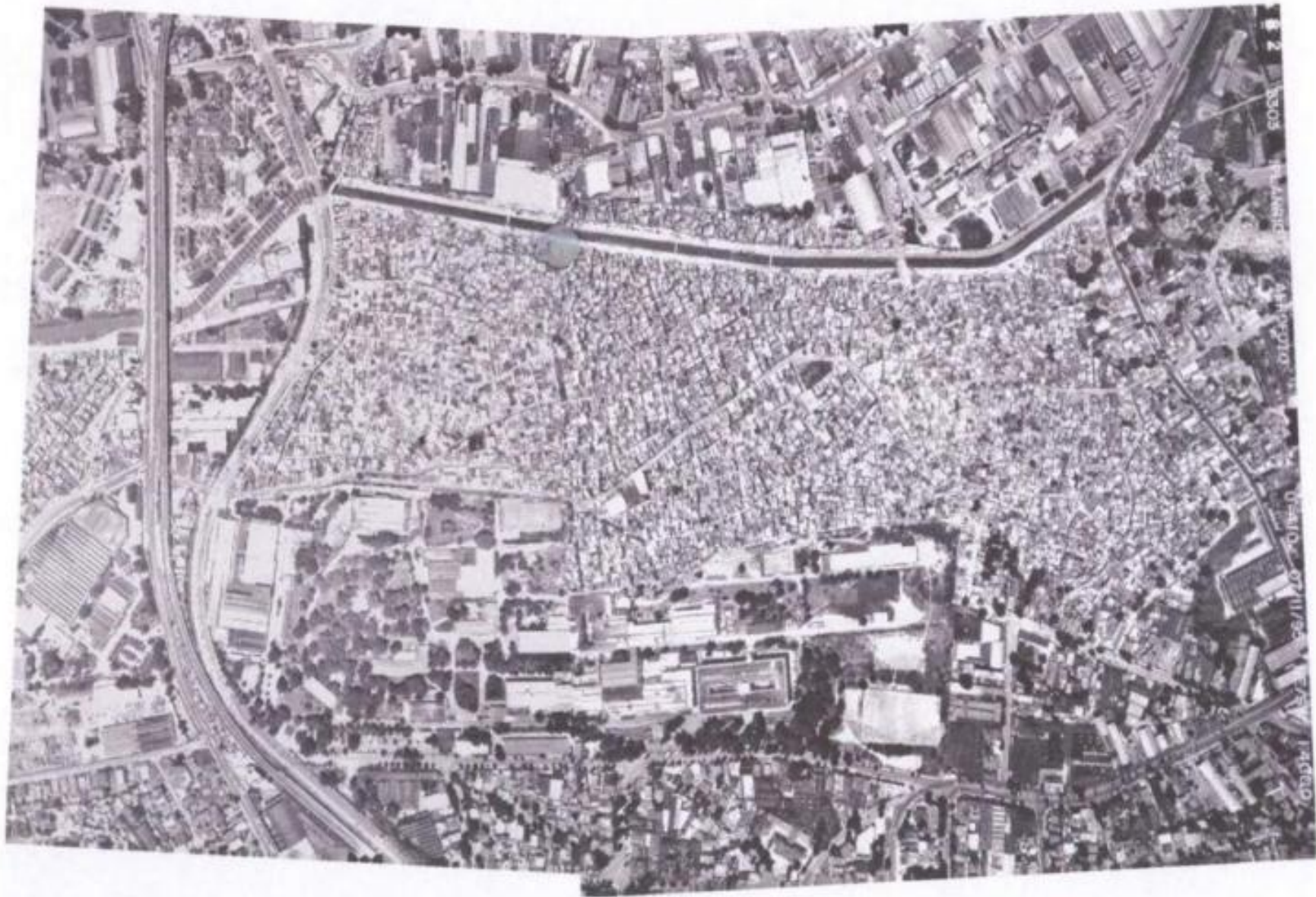
Allocate Budgets

Rio de Janeiro's Upgrading Program - Favela Bairro



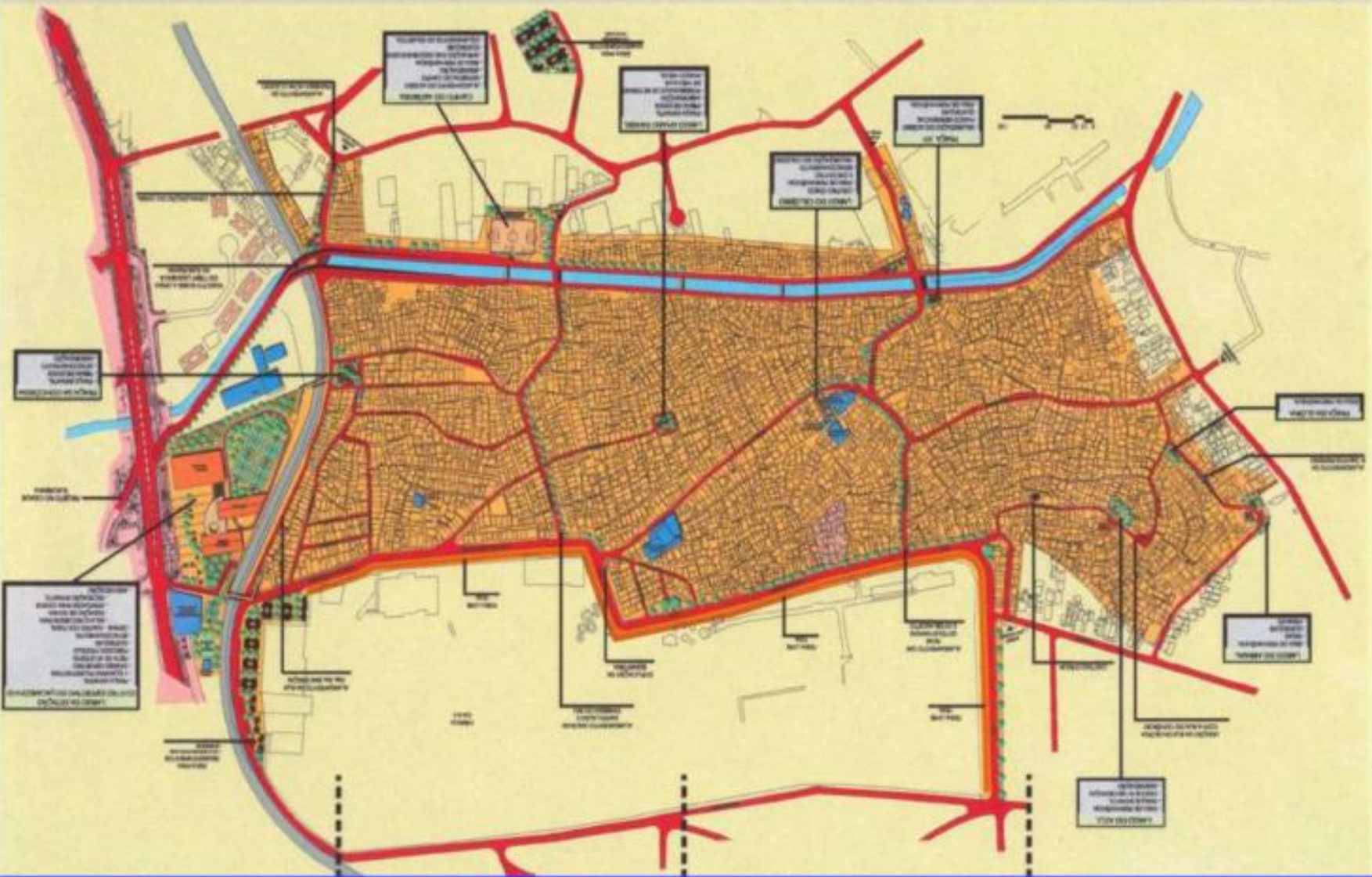
Rio de Janeiro's Upgrading Program - Favela Bairro

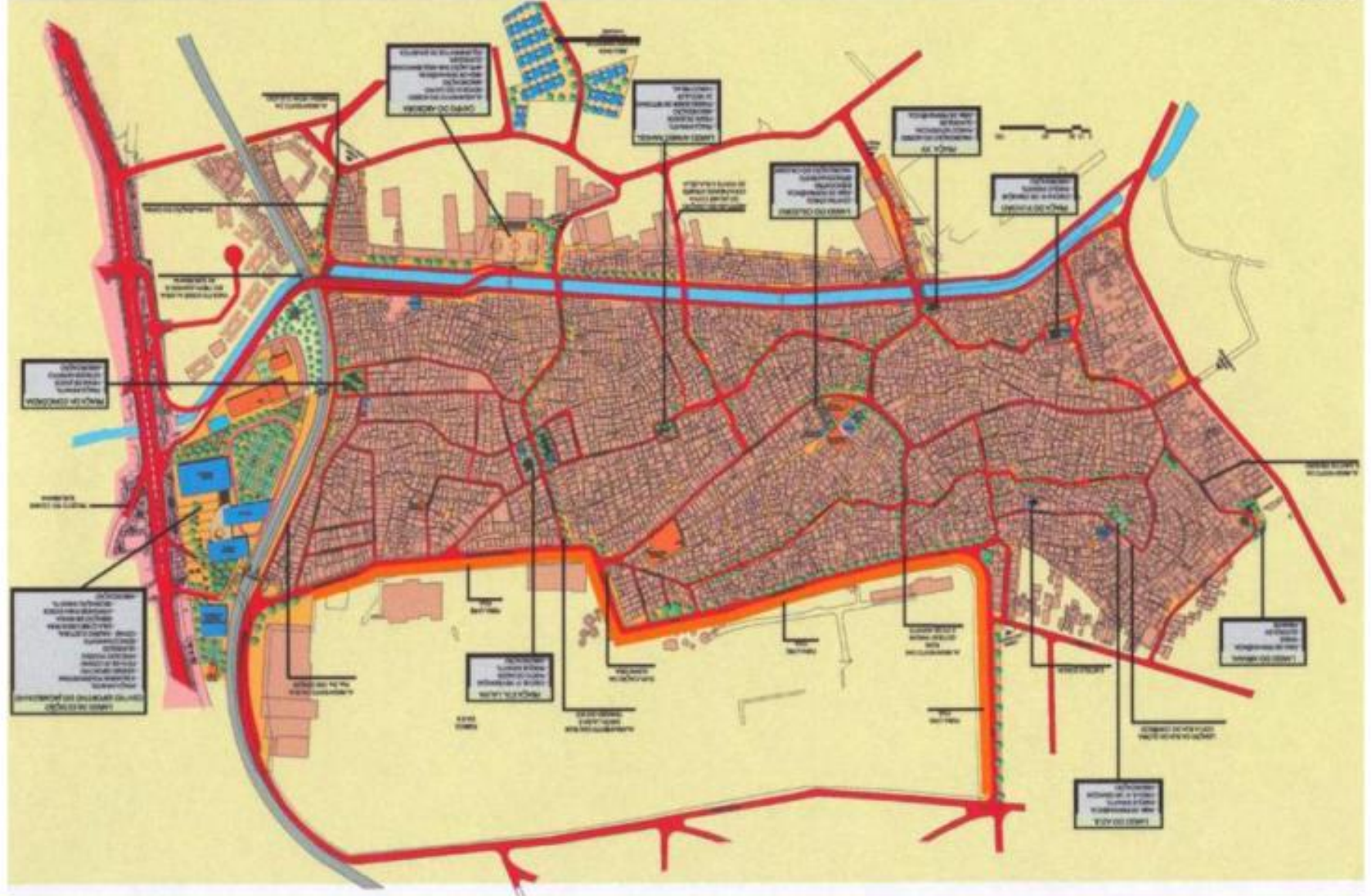




PLANO DE INTERVENÇÃO COMUNIDADE DO JACAREZINHO

FEV 98





Urban Plan: the physical planning intervention



Integrated Upgrading



Sewerage



Square



Sports Facilities Built

05/11/2008



Accessibility



Housing Construction

Claudio Acioy Jr. / UN-HABITAT



Legislation



Maintenance



Identifying & Reconciling Roads

Public Investment to improve living conditions



Public Space



Before upgrading

After upgrading



antes, durante e depois



Fernão Cardim

antes, durante e depois



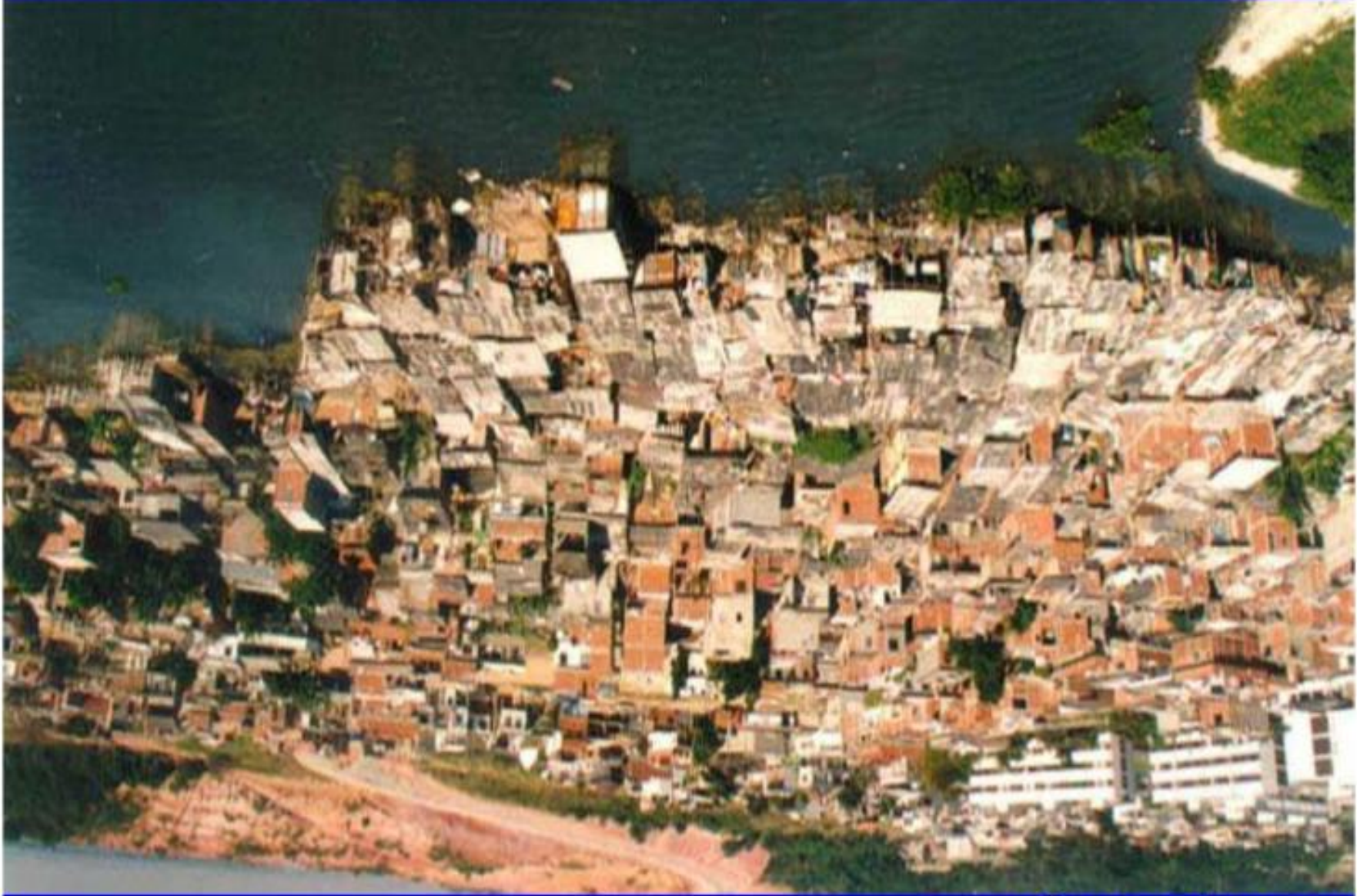
Fernão Cardim

antes e depois



Parque Royal

antes e depois



Parque Royal

antes e depois



Vidigal

Conditions for Success: Vital Areas of Inter-connected Decisions

6.

